



*Results
Booklet
2017-2018*

Key Stage 2

This data is taken from tests which children sit in May of each academic year and allows us to see how many children have achieved the nationally expected standard.

Attainment

All pupils in year 6 try to reach the 'expected standard or higher'.

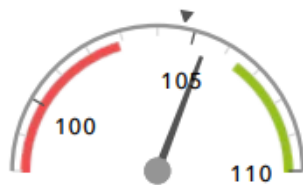
The graphs on the following pages show how the children from Kings Worthy Primary School scored in their end of Key Stage 2 SATS tests compared with Hampshire and Nationally. They also show the results from the last 3 years for comparison

Scaled Scores

Each pupil's raw mark on the test is converted to a 'scaled score' between 80 and 120. A score of 100 represents achieving the expected standard. The dashboard below shows the average scores at Kings Worthy Primary School in July 2018.

Average Scaled Score (Re, Ma)

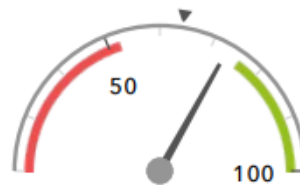
105.4



In line with the national average (104.7) ◀

% Expected standard+ (Re, Wr, Ma)

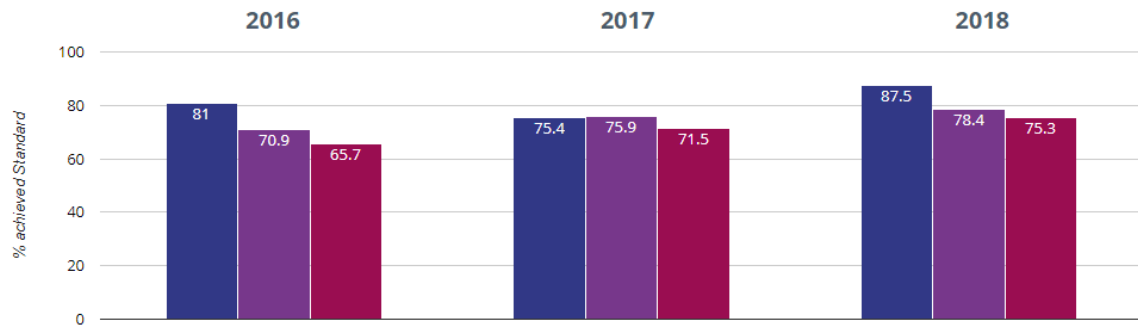
73%



In line with the national average (64%) ◀

Reading (Key Stage 2)

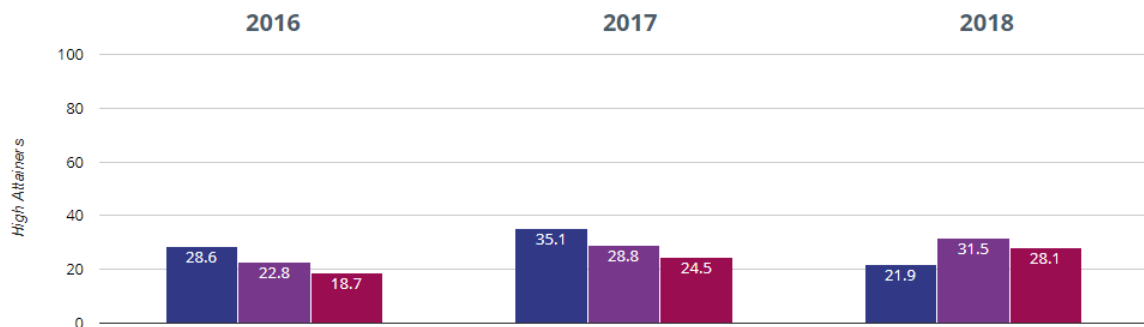
Reading - achieved standard



- Kings Worthy Primary School
- Hampshire (324)
- NCER National (15750)

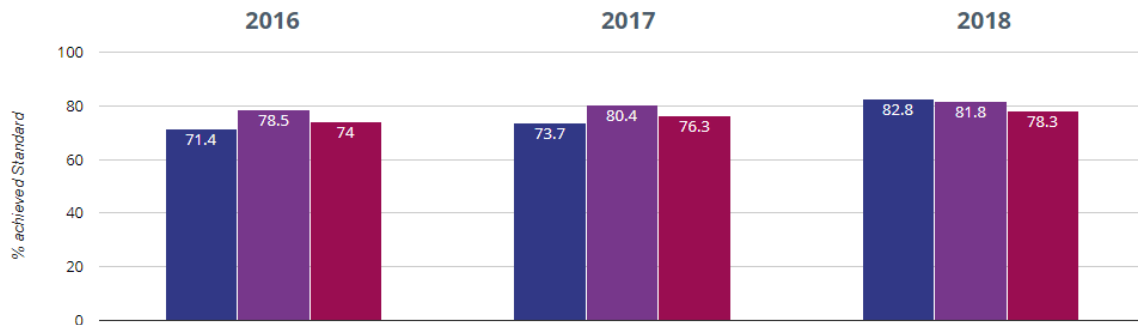
In 2018, outcomes for pupils in reading were well above Hampshire and the national average, with 87.5% of our pupils meeting the expected standard. This is a significant rise from 2017.

Reading - high attainers



Writing (Key Stage 2)

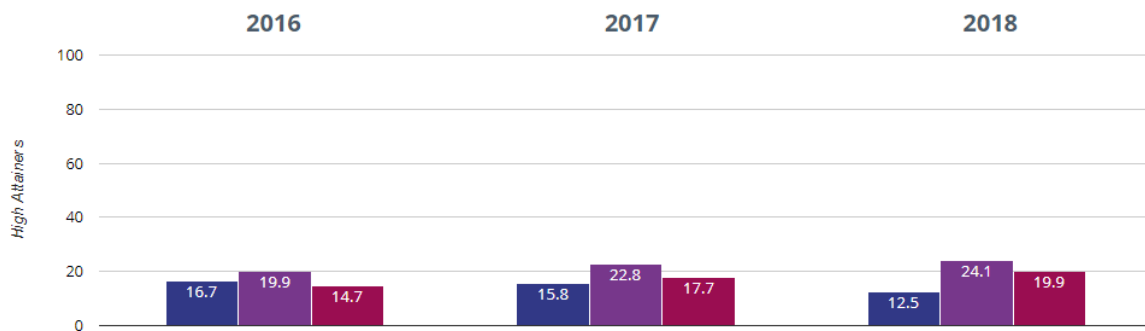
Writing - achieved standard



- Kings Worthy Primary School
- Hampshire (324)
- NCER National (15750)

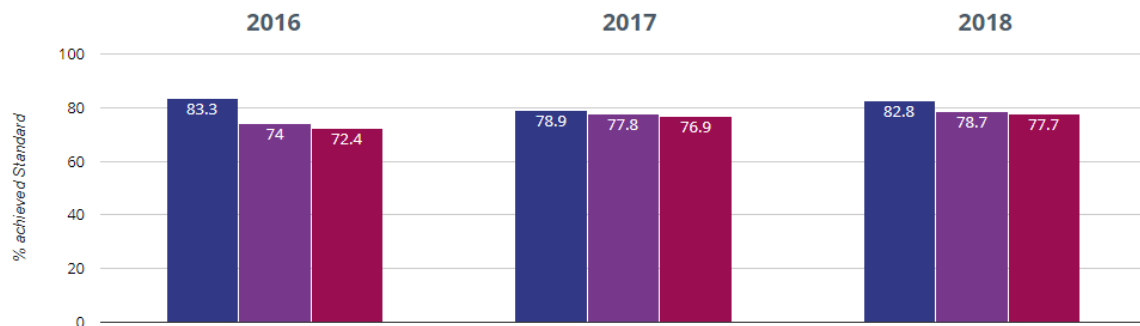
In 2018, outcomes for pupils in writing continued to rise, with 82.8% of pupils meeting the expected standard. This is back above Hampshire and national averages, improving significantly from 2017.

Writing - high attainers



Grammar, Punctuation and Spelling (Key Stage 2)

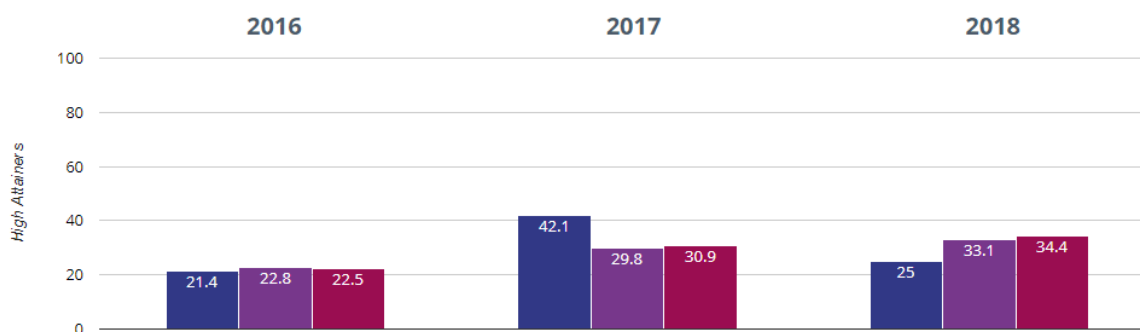
? GPS - achieved standard



- Kings Worthy Primary School
- Hampshire (324)
- NCER National (15750)

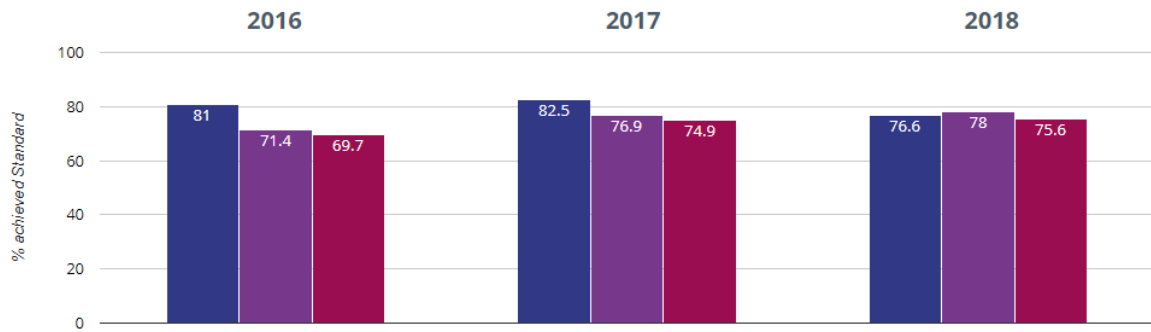
In 2018, outcomes for pupils in GPS remained above Hampshire and national averages, improving from outcomes in 2017.

? GPS - high attainers



Maths (Key Stage 2)

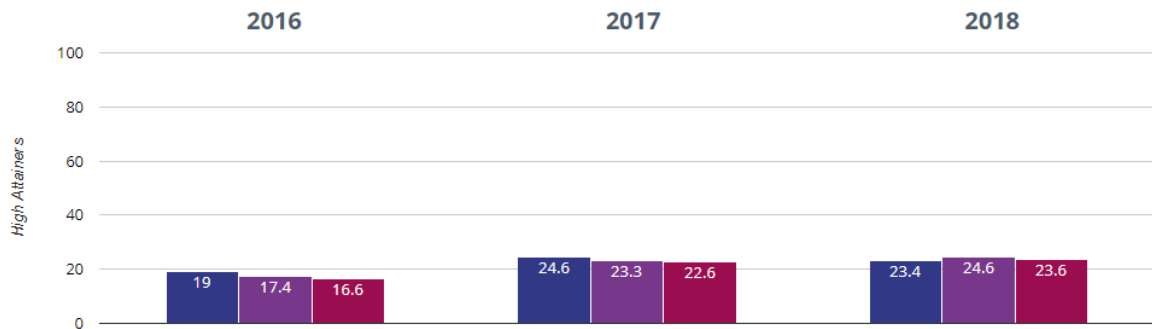
+ Maths - achieved standard



- Kings Worthy Primary School
- Hampshire (324)
- NCER National (15750)

Our results in Maths took a slight dip this year but remained above National Averages. We will be working this year on making sure that our Maths results rise back above Hampshire averages and back to the high results of 2017.

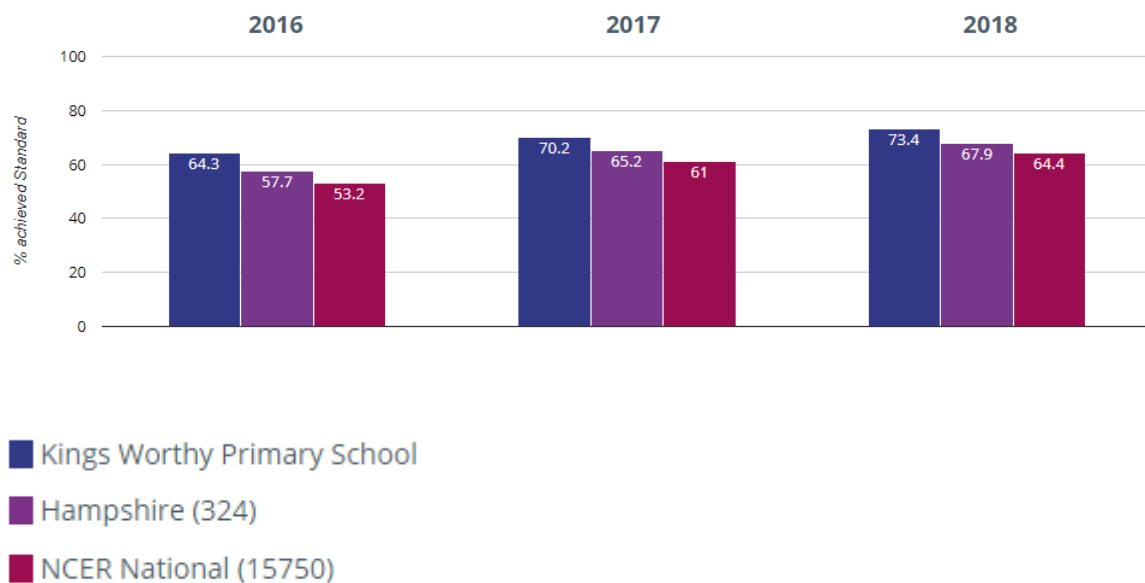
+ Maths - high attainers



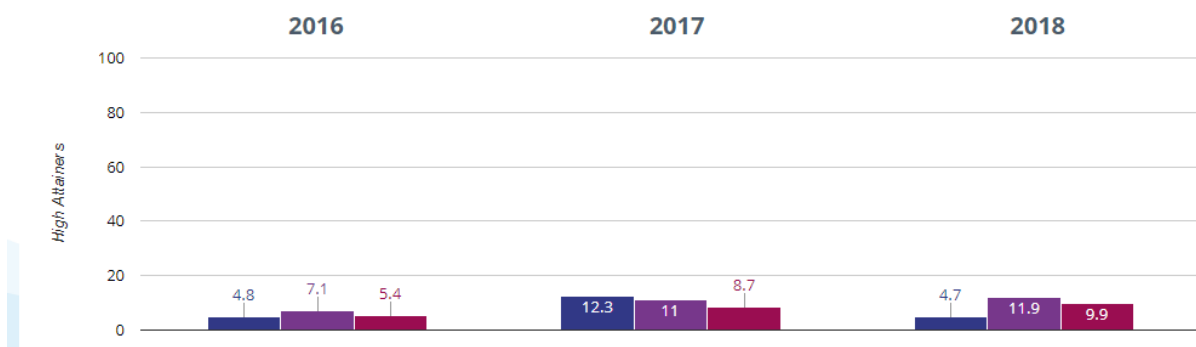
Combined Attainment (Key Stage 2)

Combined Attainment measures show how many pupils achieved the expected standard in reading, writing and maths. In 2018, our results were well above Hampshire and National averages and continued to rise from 2017.

RWM - achieved standard



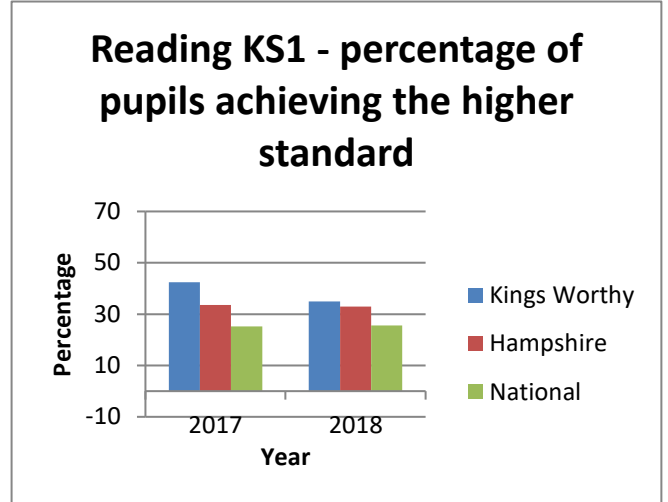
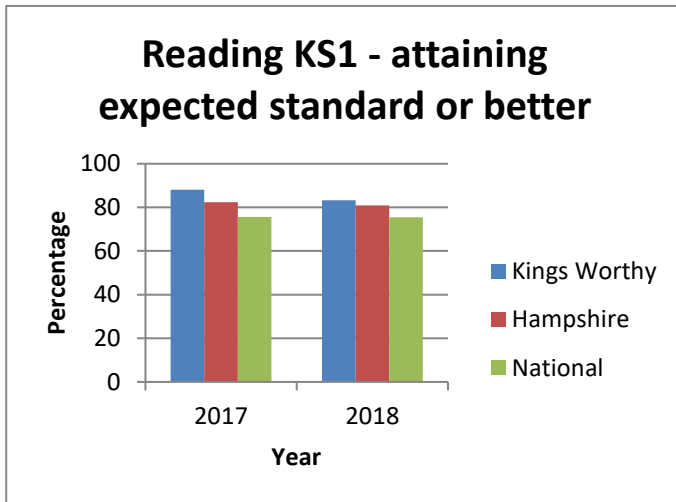
RWM - high attainers



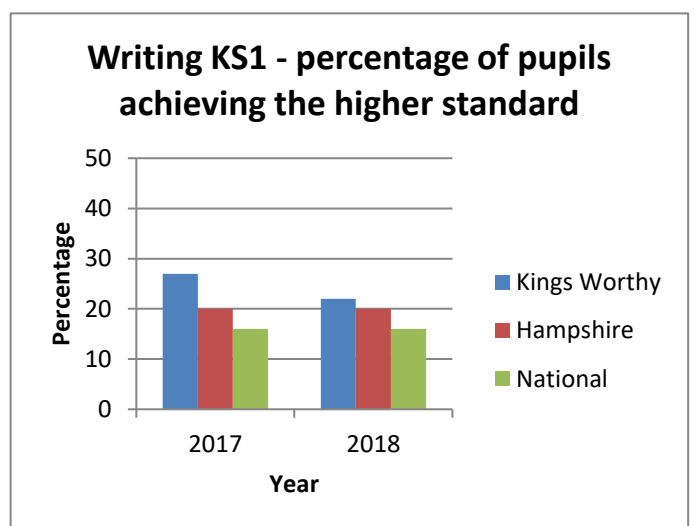
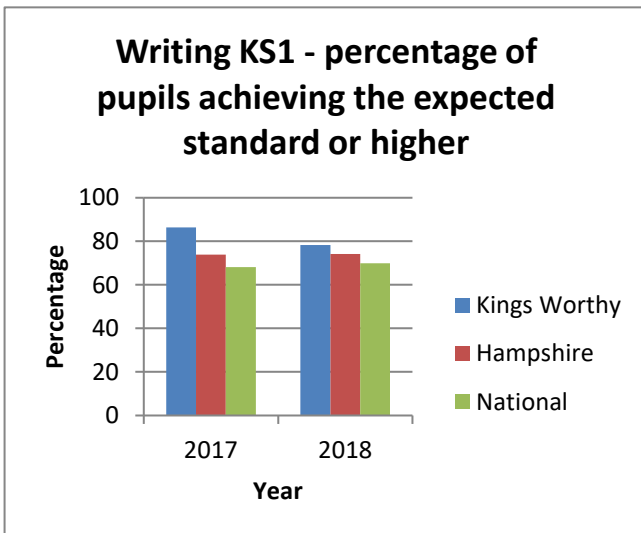
In all areas of KS2, our results for greater depth pupils were lower than National and Hampshire averages. We will be working with our staff this year to focus on this area, looking at how we can increase the number of pupils achieving the higher scores on the tests.

Key Stage 1

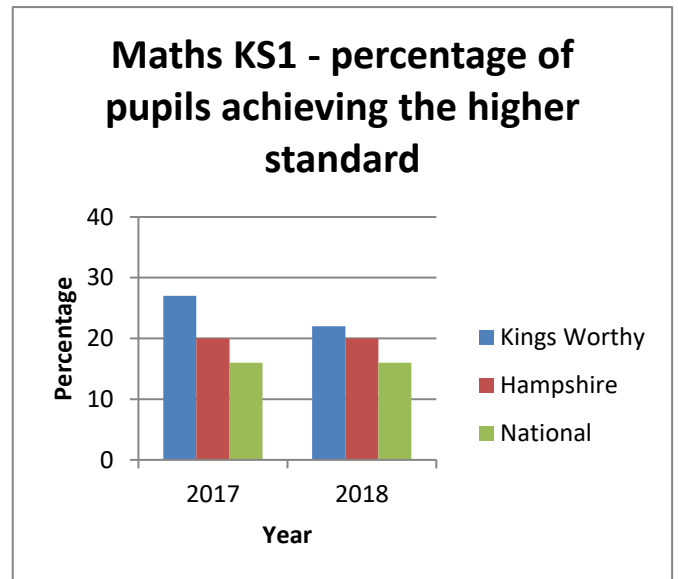
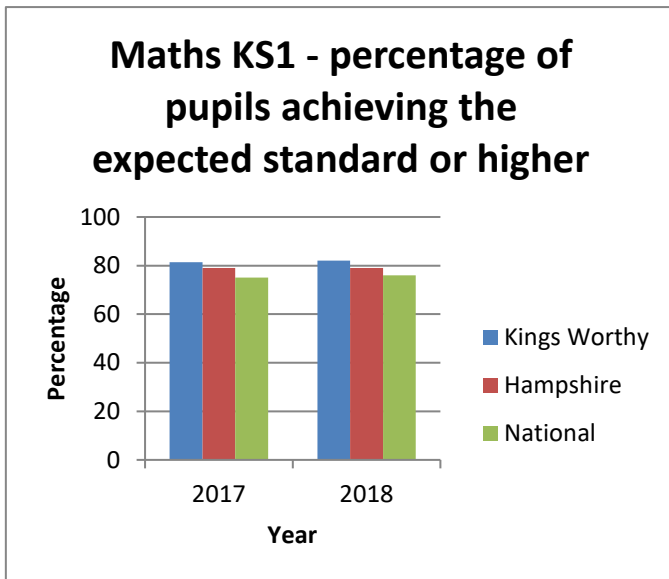
Testing in Year 2 is based on teacher assessment which is informed by tests that children sit, usually in May of the academic year. Children are expected to achieve ARE (age related expectations) by the end of Year 2. Some children will be working towards ARE and some children will be exceeding ARE.



The graphs above show that in reading at KS1, Kings Worthy primary school achieved better than National and Hampshire averages in the percentage of pupils achieving the expected standard and the percentage of pupils achieving the higher standard.



The graphs above show that as with reading, we continue to outperform both National averages and Hampshire averages in writing at KS1 on all measures.



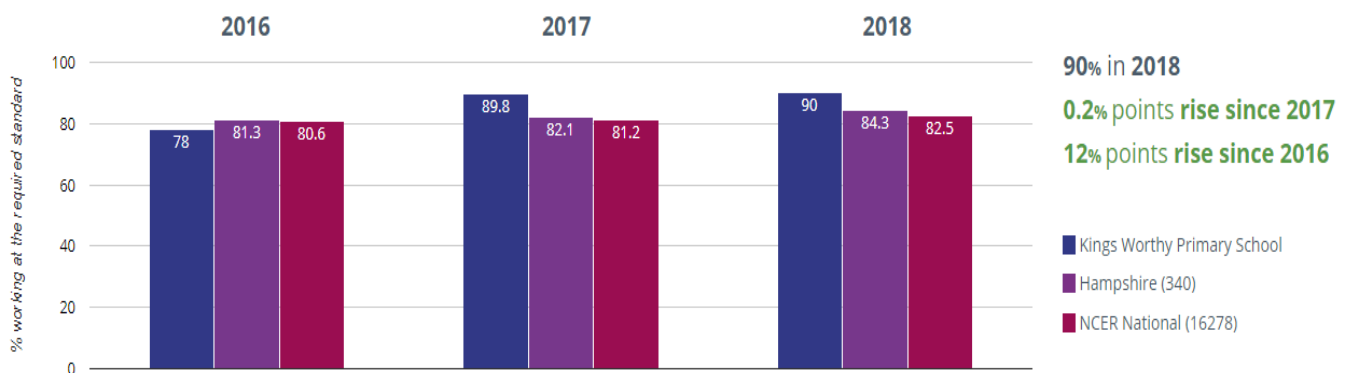
Kings Worthy continues to achieve impressive results at KS1, with pupils performing well on all measures in Maths at the end of KS1.

Year 1 Phonics Check

2018 was the seventh year of the national phonics check. Its aim is to flag up any children who are at risk of underperforming in phonics as this has a direct correlation with a child's ability to read and subsequently attain standards which will prepare them for later life. The figures below are a percentage result.

The test was a simple pass or fail with a pass mark set at 32 out of a possible 40. Words were a mixture of real and nonsense words e.g. 'strom' and 'fape'.

Year 1: Working At



Early Years Foundation Stage (Reception)

Defining a Good Level of Development (GLD)

From 2014, children will be defined as having reached a GLD at the end of the EYFS if they achieve *at least* the expected level in:

- the ELGs (early learning goals) in the prime areas of learning (personal, social and emotional development; physical development; and communication and language) and;
- the ELGs in the specific areas of mathematics and literacy.

★ Good Level Of Development

